

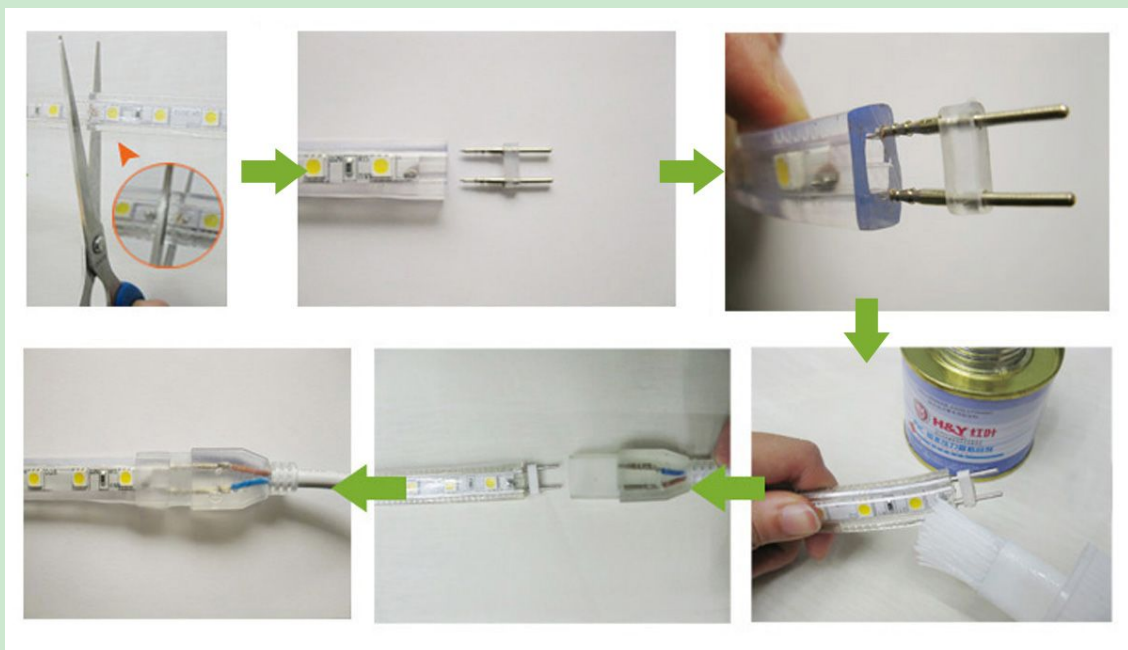
# Installing Manual of the High Voltage SMD LED Strips

## 1. Where to Cutting the Strips?

See the following photo, Just cutting at the place which there is the cutting gap between every unit from the strips.

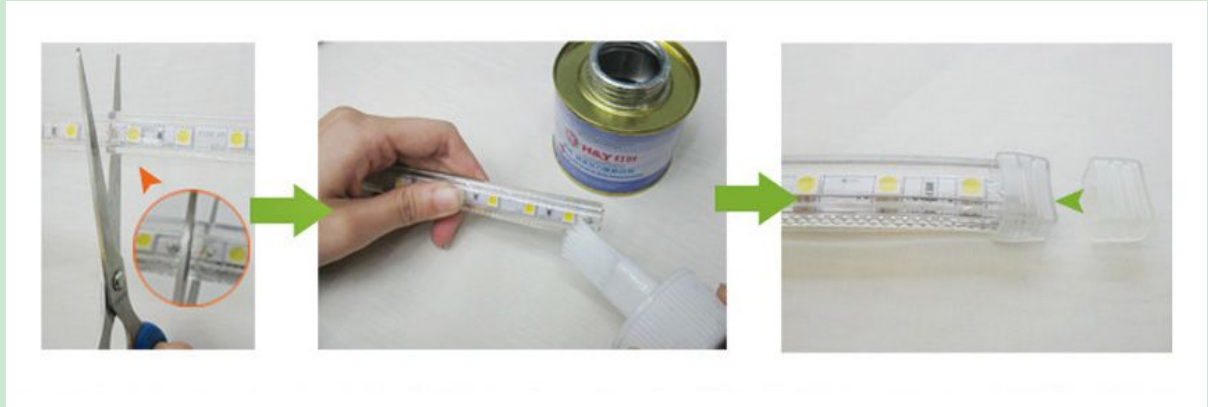


## 2. How to install the power plug?



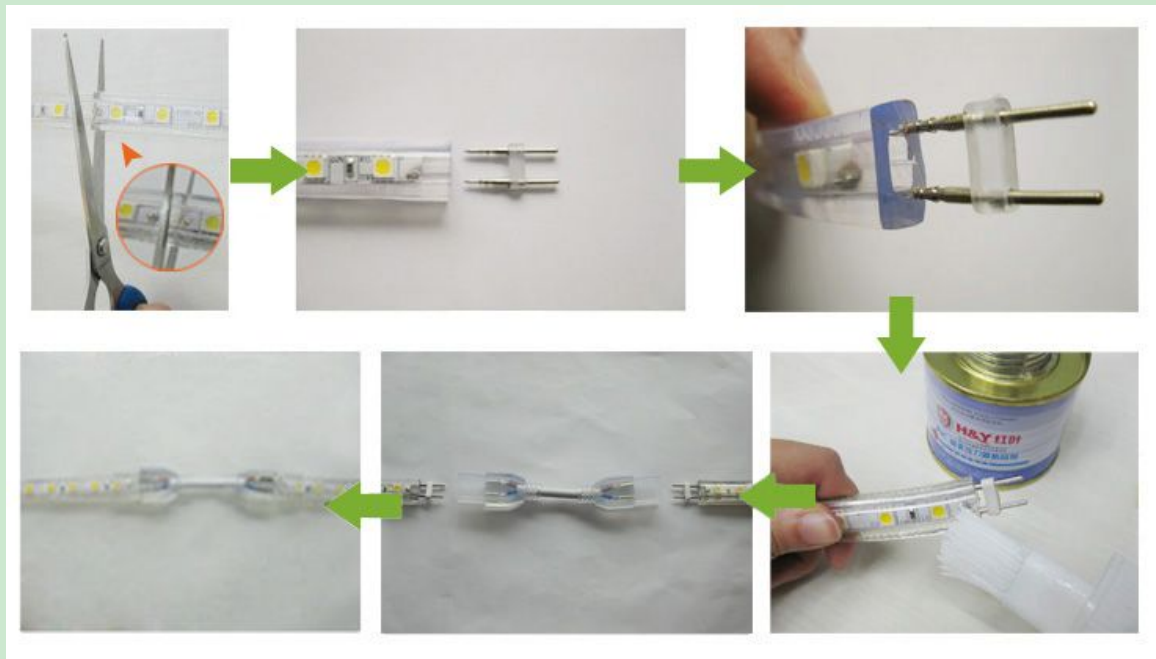
After cutting the the strips, First insert the small pin, After making it tightly, Then taken some PVC glue to the strips, Then insert the power plug tightly, It can be working now.

### 3. How to connect the End Cap?



After cutting the strips, First taking some PVC strips at the strip side, Then Insert the end cap tightly, It is ok now.

### 3. How to install the Middle Connector between the strips?



After cutting the strips, First insert the small pin, Once insert tightly, Then taken some PVC glue on the strips, At last ,Insert the middle connector, It is ok now.

#### 4. How to install the Fix Clip to the strips?



Just seen the above photo, You can push one pcs of the fix clip on the strips between each 30cm(1m use 3 pcs),Then use two pcs of the screw in the two holes from the fix clip. Make it tighten, Then it can be working well and can be prevent drop.

### **DeRun Lighting Technology Co., LTD**

**Add. : No. 709, Lankun Building, Minzhi Road, Longhua, Shenzhen, China**

**Tel:86-755-33304059**

**Attn: Sarah**